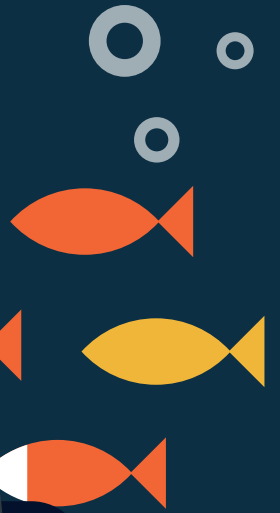


30 TIPS



FOR SHOOTING BEAUTIFUL SCUBA PHOTOS



CAMERA SETTINGS



WHEN USING A STROBE

Shoot manual (M), use aperture to control the foreground and shutter speed for the background - Use 1/125 f/5.6 and ISO 100 as a base point.



When shooting with a video light or no lights, use

APERTURE PRIORITY



MAKE SURE YOUR SHUTTER SPEED IS FAST ENOUGH TO AVOID MOTION BLUR FASTER THAN

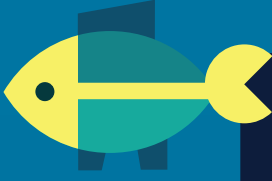
1/60QS



**RED FILTER OR STROBE/LIGHT,
NEVER BOTH TOGETHER**



OR



Turn off
RED EYE
Reduction
flash mode.



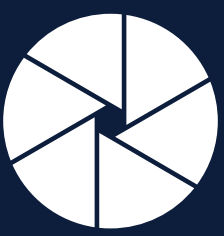
SHOOT RAW
(use Lightroom to edit).
If shooting JPG, choose
highest MP, Super Fine



When shooting with the flash
on manual set camera flash to
minimum, to save battery



**DON'T USE AUTO ISO,
UNLESS YOU KNOW
WHAT YOU'RE DOING**



USE A NARROW APERTURE WHEN

Shooting macro for better Depth of Field
(Narrow Aperture = High F number)

Using wide angle wet lenses and domes
(improved corner sharpness)

Make sure exposure
compensation is on 0,
unless required
otherwise

MAINTENANCE

Grease O-rings when
placing the gear
in storage.



ALWAYS

check your O-rings for hair
and sand before closing
the housing.



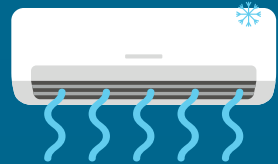
**WHEN USING A NEW HOUSING,
ALWAYS GO ON THE FIRST DIVE
WITH AN EMPTY HOUSING.**



Use moisture
absorbent on
Polycarbonate
 housings.



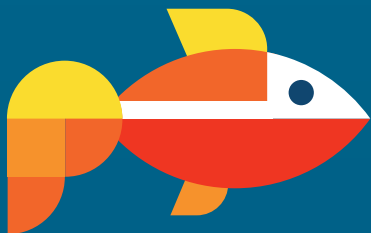
Diving in a humid climate?
Install the camera and seal
the housing in an air-conditioned,
dehumidified room to avoid fogging.



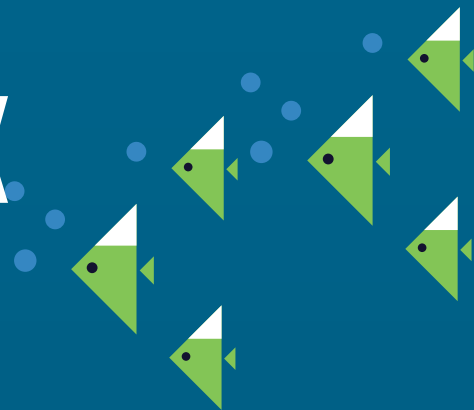
Best way to clean an o-ring -
wash in fresh water, and dry
up with a microfiber cloth.



Rinse well after dive
(use bucket or rinse tank).
Press all buttons and move
all knobs in fresh water.



DON'T FORGET



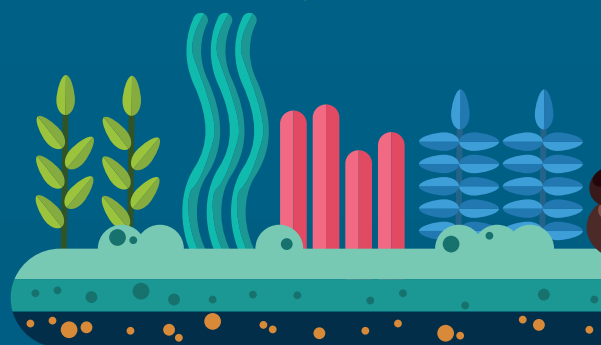
TURN THE CAMERA ON
(if the housing does
not support it)



Make sure you have an
EMPTY SD
Card in the camera

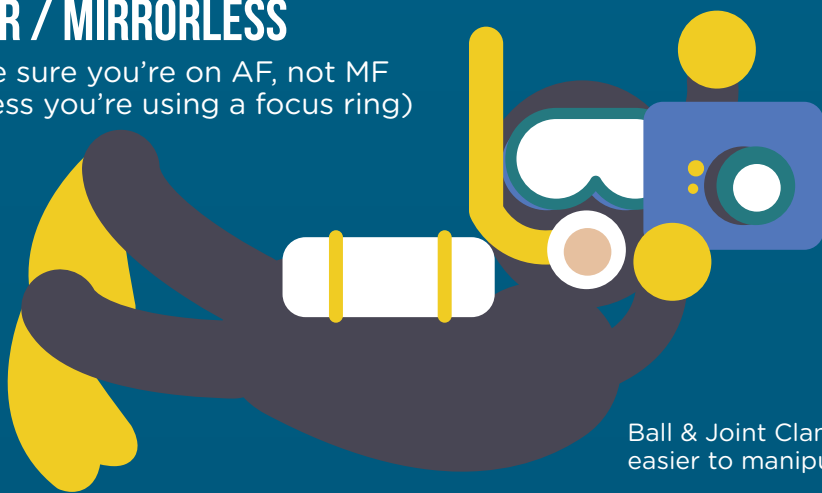


Check the
CAMERA BATTERY



DSLR / MIRRORLESS

Make sure you're on AF, not MF
(unless you're using a focus ring)



Ball & Joint Clamps facing you -
easier to manipulate underwater



**POP UP THE FLASH
BEFORE ENTERING
THE WATER.**



Take a test shot to make
sure the strobes are
triggering and syncing



Use a lanyard
secure your
system to your
hand or BCD



All accessories
secured with lanyards
to the housing / tray



**SHOOTING WITH
STROBES**
fiber optics
connected
properly?

THE NIGHT BEFORE



Visually double check all o-ring seals before jumping in. Look for hairs, security lanyards caught in the seal, unusual gaps.

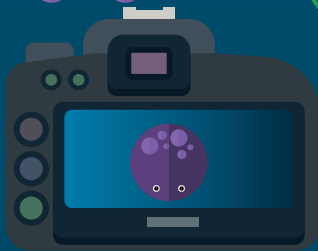
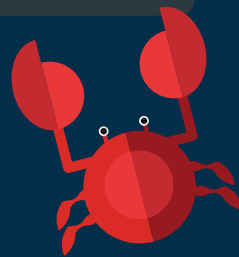
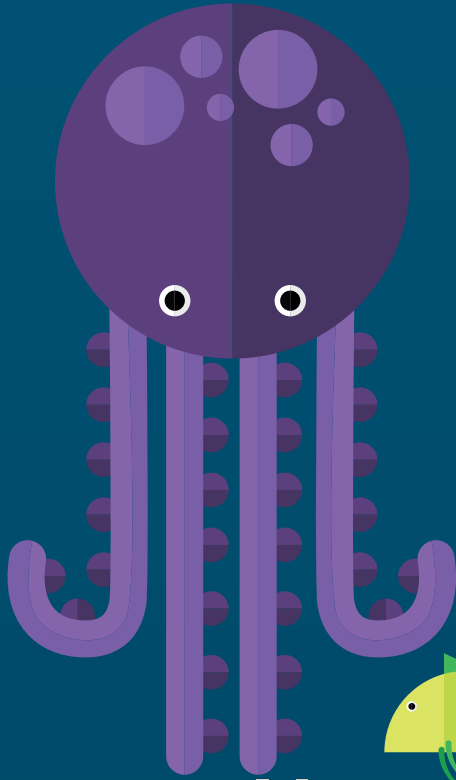


Check the housing / lights for leaks as soon as you hit the water

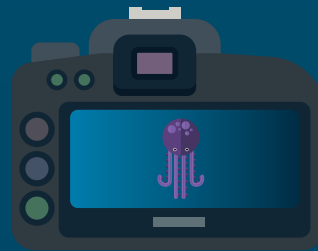
PHOTOGRAPHY TIPS

GET AS CLOSE AS YOU CAN TO THE SUBJECT.

- Assemble the package and check everything
- Charge batteries and charge the spares as well
- Download photos and empty your SD card
- Prepare a Save-A-Dive kit with important spare parts and maintenance



SHOOT UP, OR AT LEAST EYE LEVEL.

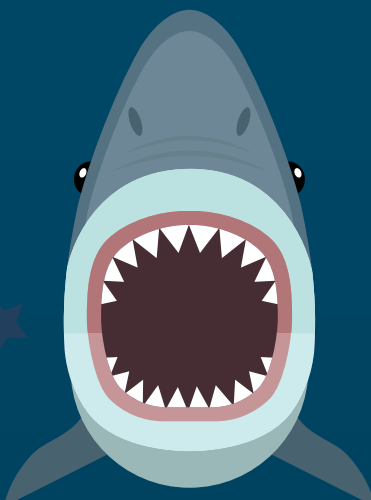


SHOOT SUBJECT IN THE CENTER, BUT PRE-PLAN YOUR CROP



ADJUST STROBES TO SHAPE OF CORAL, BEFORE GOING INTO POSITION FOR THE SHOT

SAFETY, DIVE AND BALANCE FIRST, PHOTOGRAPHY SECOND MIND YOUR FINS!



UNDERWATER PHOTOGRAPHER SAVE-A-DIVE KIT



O-RING GREASE



SEVERAL MICRO FIBER CLOTHS



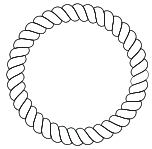
ALLEN KEY SET



SCREWDRIVER PHILLIPS AND FLAT



SECURITY LANYARDS



STRING



HAND STRAP



SPARE O-RINGS



SPARE BATTERIES FOR LIGHTS, CAMERA, VACUUM SENSOR



O-RING REMOVAL TOOL



DRY TOWEL



SILICA GEL / ABSORBENT SACHETS



SPARE SD CARD (NOT MICRO SD WITH ADAPTER!)



mozaik
UW CAMERAS

WWW.HOUSINGCAMERA.COM

For more great tips, visit our blog at:
www.housingcamera.com/blog